



MAP ENERGY

Infinity Growth



Call : +91- 97559 33507
+91- 98267 04007



Website : www.mapenergy.in
E-Mail ID : headoffice@mapenergy.in

About Us



Established in the year 2011, one of the leading construction Companies in India which is built by Manpower, expertise and credibility. While the Company has diversified activities, it mainly focuses on providing specified Services in Power Sector. The Company is associated with Major Power Utility Companies of Public and Private Sector in India in the area of Annual Operation & Maintenance contract & Capital and major overhauling and also Erection, Testing, Commissioning Power Plants up to 800 MW.

At present we have got well trained staff and workers to meet with any kind of major works and exigencies. We have a team of highly qualified enthusiastic Engineers and other Professionals, and highly skilled manpower who have developed their expertise in every field. We work hard every day to make our customers fully satisfied by providing superior quality services, Good Maintenance for achieving optimum Production while ensuring maximum Health & Safety and minimal Environmental impact. The Company also provides after sales services and trouble shooting for speedy recovery and very less down time. We have Site Experts who can handle and operate the project and related problems. The members of our Project Team are highly skilled, experienced and trained and are responsible for the overall progress of the Project. The Company always provides to its team various career development and training opportunities to yield better results. Further, we have also tied up with various Expert Agencies for carrying out specialized jobs like Radiography, Heat Treatment, and Thickness Measurement and to provide Experts (Ex. NTPC, BHEL, VBIL) in the Power Sector.

In all the Years of its working, Map Energy has given utmost importance to ensure the Safety of its Manpower, Equipment's and Work Place. Safety measures are followed very strictly at the work Sites and its office.

Mission



To be recognized one of the leading construction companies in Power Industry based on excellence, creative ideas, innovative methods, comprehensive execution of projects and commitments to the customers with total confidence. We believe that maintenance as one of the most important tools for optimizing production. We continuously strive to fully master the technology into our clients production objectives. We are actively facilitate the development of rich natural and human resources in a financially, socially and environmental responsible way.

Vision

MAP Energy is the leading independent Operation and Maintenance Specialists for Power Plants of leading Public Sector and Private Sector Companies. Further to ensure quality workmanship to meet or execute customer requirement. Timely completion of Projects by introducing new methods and innovative ideas in projects. To achieve organization skills and achieving growth by adopting new techniques. We are committed to maintain highest standards of Occupational Health & Safety and environment protection as we focus on improving safety procedures to achieve goal of zero incident.

Our Core Members



JANARDAN KAR

Chief Technical Advisor
Ex-ED NTPC, Ex - MD CSPGCL
9682999977



MANTOSH KUMAR

Chairman & Managing Director
9826704007



ALOK BANAFAR

Head of Department
Projects & Business Development
9752797810



VIKRAM P SINGH

Head of Department
Operation & Maintenance
7894104001



AWINASH RANTAI

Head of Department
Human Resource & Administration
9827186456



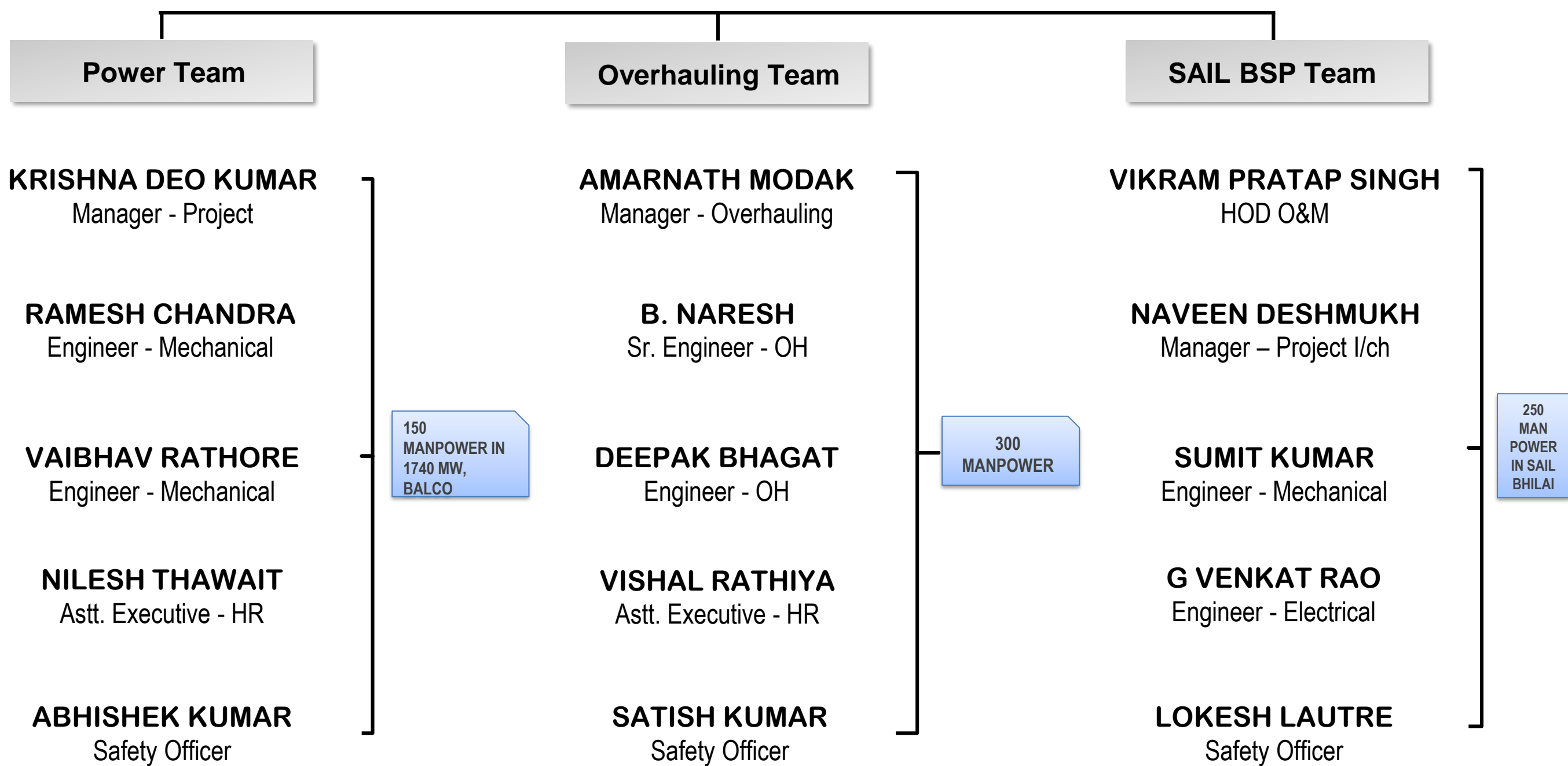
Harsh Kumar

Manager
Planning & Commercial
88140243856

Team Members



SURYA VAISHNAV
Manager
Human Resource & Administration
7000373215



Policy & Management



It is the policy of MAP Energy to protect the health and safety of our employees, customers and the peripherals. Higher management shall ensure to align among the whole company globally. This Environmental, Health and Safety (EHS) policy of MAP Energy committed to:

- Create a workplace free from accidents, injuries and exposure to hazards, conserve natural resources and prevent pollution to protect the ecological balance.
- Use process of safety and management procedures like Safety Audits, health analysis and documentation of housekeeping and storage related information
- Prepare ourselves to address EHS emergencies.
- Continuous monitoring of objectives and targets to improve our EHS performance.
- Establish global standards for EHS that are technically and scientifically sound to protect human health, safety and above all the environment.
- Acquire genius for a better organizational structure to support achieving these objectives.
- Circulating the EHS values throughout the company.
- Review and report to the Management about EHS performance on a periodic basis to improvise the standards continuously.
- Health being the indispensable organ of any organization is to be given top priority and monitored strictly periodically.

Our Safety Culture at Workplace



- Our first & foremost target is maximum customer satisfaction with highest safety standards.
- Safety in our concern is way ahead of anything else.
- We give respect to all critical angles of safety proposed by any concern.
- There is no margin for error regarding safety in our organization.
- Obeying all safe rules 81. Norms introduced anywhere at any point of the Universe.

- We provide safety to all our fellow men.
- Regards to others views regarding safety.
- All workmen should come to site with a fresh mind.
- None is allowed to the site without proper PPEs which is provided by us time to time.
- Safety officer & the site representative will address all the workers everyday morning to discuss the safety views 81 reviews.

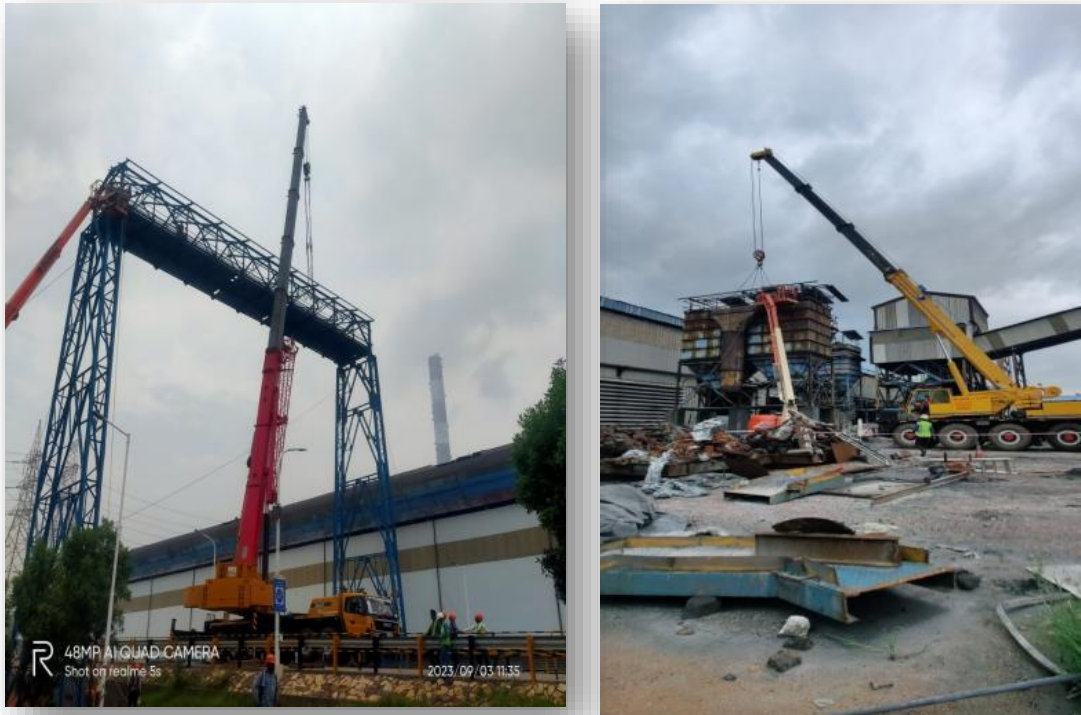


- Tool box report has to be made at first.
- Job Safety Analysis is being done before taking up any jobs.
- No work can be done unless and until it is inspected by supervisory staff and declared conducive for safe execution.
- After having clearance from supervisor & department the work will be started with a five minute safety discussion.
- All other terms & conditions of safety of the client is accepted by us.

Our Services & Project Experience



As the leading company under Erection, Fabrication, Maintenance & Operation, we offer a comprehensive range of services to meet your needs:



Fabrication & Erection Services

Fabrication and Erection of Heavy structure with quality workmanship up to testing and Commissioning. Erection of Boiler Auxiliaries, Mills, of power plant and infrastructure equipment's

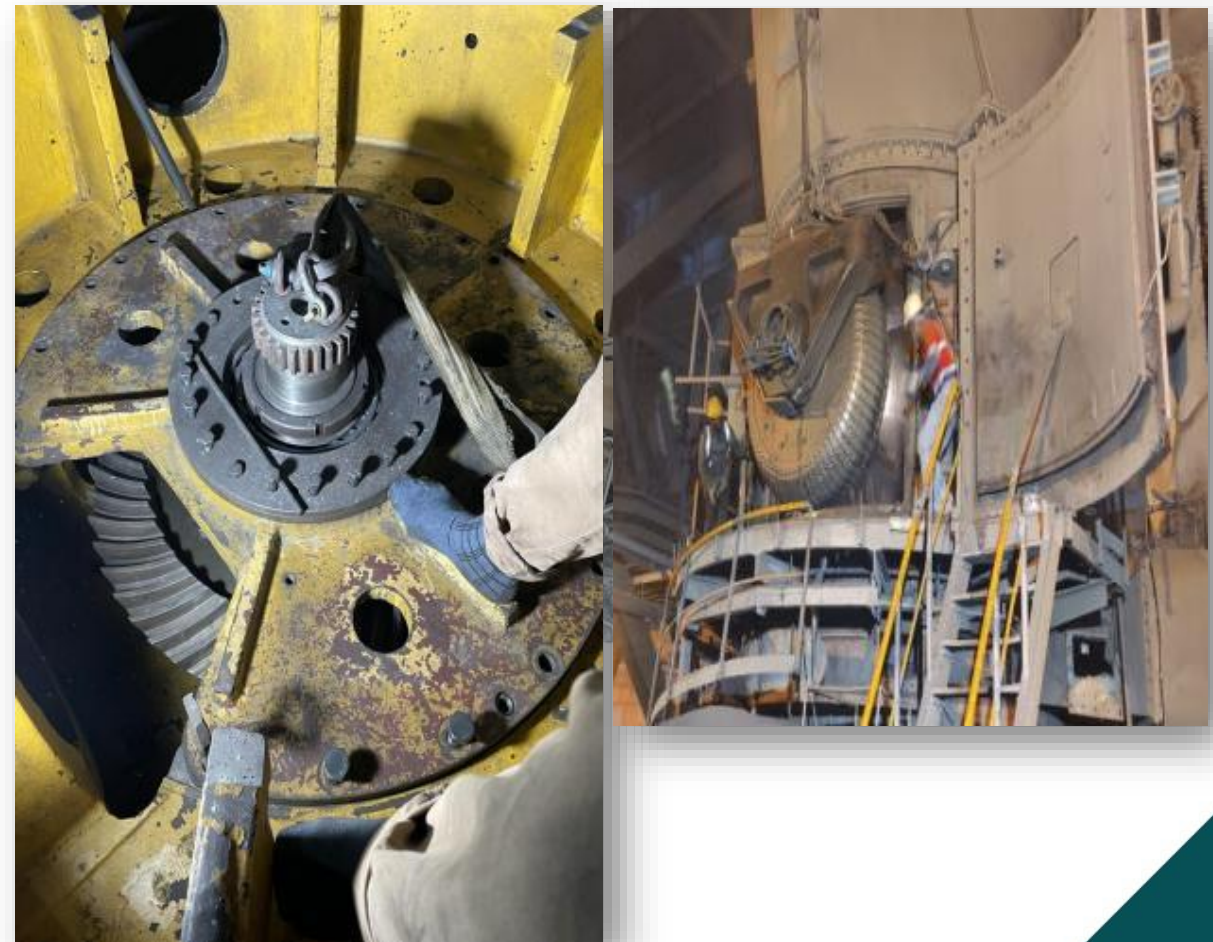
like -

- Steam Generators (Boiler)
- Turbine Generators (TG)
- Piping System
- Balance of Plants (BOP)
- Fabrication and Erection of Structures
- Electro static precipitator (ESP)
- Air-Pre-Heater (APH)
- Rotary Equipment's
- Coal Handling Plant
- Ash Handling System

Shutdown and Overhauling

Renovation and Overhauling of all Pressure and Rotary parts of Power plants as well as repair-modification and rehabilitation for :

- Boilers and Auxiliaries
- HP/LP piping
- Generator, Turbine and Auxiliaries
- **HT/LT Motors**
- Coal Mill and accessories
- Ducting & AHP
- Coal Handling Plant
- Repair, Replacement of ESP component.



Annual Maintenance Contract

Annual Maintenance Contract is to our customers at a cost that helps keep their plant in proper working condition by providing as reasonably necessary all man and machine and professional, supervisory and managerial personnel as are required to perform the Services. Our Scope and work arena

Mechanical : Boiler TG & Mill, Coal Mill, TG, CHP ,Motor, **ESP** Pressure Parts . AUX. , BOP, System Of Ash Handling System. Drain To Rench Pipe Work, Rym OF XRP-803 MILLS & ITS Components , RYM Of Boiler Maintenance.

Electrical : **ESP**, Transformers , **LT Switch Gear**, **LT Blowers**, **HT / LT Motors C & I** etc.

Our



Maintenance Strategy

We have a definite plan to implement the basic industrial maintenance i.e. predictive maintenance, Preventive maintenance, Corrective maintenance. Breakdown maintenance - overhauling.



- Continuous monitoring of the system in accordance with the operation team.
- Efficiency Measures as per the observation.
- Defect list of past 2 years.
- Renovations and corrective measures with global overview.
- Spare life period and preventive measures having technical sharing with OEM.
- Quality of Consumables and outsourced spares
- Quality of T&P and Machineries with ready to use test certificates.
- 100% utilization of technical skill.
- Checklist as per the design and standards.

- Addressing in field experts after corrective maintenance.
- Equipment performance overview.
- Minimization of power utilization
- Team Work lead by efficient Engineers having sufficient in field knowledge.
- Safety and precautionary measures from point to point observation
- Making approach for the SOS maintenance throughout the plant..



- Waste Disposal / ash disposal / waste lubricant disposal/ metallic and nonmetallic Scrap disposal approaches to be modified.
- Reporting and filing of maintenance activities.
- Job Safety Analysis.
- SOP and SMP as per the drawing and design

Our Work Details



S. NO.	Location	Description	Customer	Status
1	Balco/Korba	Manpower Assistance 540MW	M/s NGSL	Completed
2	Balco/Korba	Third Party Inspection for UT, MPI, DPT for 1740MW Plant	M/s NGSL	Completed
3	Balco/Korba	Manpower Assistance 1200MW	M/s NGSL	Completed
4	Balco/Korba	300MW APH Maintenance, Baskets Replacement, Bearing & Gearbox inspection & maintenance.	M/s NGSL	Completed
5	Balco/Korba	300MW Insulation of TDBFP , Insulation of HPSV , Insulation of IPCV	M/s NGSL	Completed
		Insulation of HPCV	M/s NGSL	
6	Balco/Korba	300MW Boiler Scaffolding Work , Heating for Nut Opening , Heating for Per Nut Closing , Induction Heating	M/s NGSL	Completed
7	Balco/Korba	Support Services CHP for 1200TPH and 1000TPH system	M/s NGSL	Completed
8	Balco/Korba	OH Coal Mill Along Liner Replacement , New Airport Assembly Erection , Mill Set of Roller Reversal / Renewal , Gear Box	M/s NGSL	Completed
		Coal Pipe- (Approx.) , Coal Bends Replacement	M/s NGSL	
9	Balco/Korba	ESP Unit # 2 Collapsed Chamber Rectification / restoration	M/s NGSL	Completed
10	Balco/Korba	Supervision of CHP Maintenance Job 1740 MW	M/s NGSL	Completed
11	Balco/Korba	ESP / BAG HOUSE Unit # 1 Filter Bag Replacement	M/s NGSL	Completed
12	Balco/Korba	Engineer Service Support for AMC	M/s Feedback Power	Completed
13	Balco/Korba	Turbine HPSV Overhauling	M/s Feedback Power	Completed
14	Balco/Korba	Vehicle Support	M/s TATA Project	Completed
15	BALCO	Dismantling of Anode plant for New project Installation	M/s B&R	Completed
16	BALCO	Dismantling of Old Structure	M/s KEC	Completed

Our

Work Details



S. NO.	Location	Description	Customer	Status
17	Balco/Korba	Erection of Batching Plant	M/s L&T	Completed
18	Balco/Korba	Dismantling of Old Structure, Sheeting & Equipment	M/s L&T	Completed
19	Steag/JSG	Overhauling of ESP & AHP Unit # 4	M/s Steag	Completed
20	ESL/Bokaro	Overhauling of PCI Mill	M/s ESL Vedanta	Completed
21	Balco/Korba	IBR Welders & Grinders Support	M/s NGSL	Completed
22	Adani/Tilda	Overhauling of Coal Mill	Adani	Completed
23	KEC/Korba	Structural Assembly and Erection	Balco	Completed
24	Cranex/Korba	EOT Crane erection and commissioning	Balco	Completed
25	TRN Energy	Replacement of Coal Burners, Overhauling of APH & ESP, Replacement of Duct Plates & Expansion Bellow	M/s TRN Energy	Completed
26	RKM Energy	Overhauling of APH Unit #2 at 2x360MW RKM Powergen, Kharsia	M/s RKM	Completed
27	RKM Energy	Overhauling of Boiler Pr Part Unit #4 at 2x360MW RKM Powergen, Kharsia	M/s RKM	Completed
28	ADANI TILDA	Overhauling of Coal Mill at 2x660MW Adani, Tilda, Raipur	M/s Adani	Completed
29	BHILAI C.G.	Operation & Maintenance of Electrostatic Precipitators <u>SP3</u>	M/S. SAIL BHILAI	Completed
30	BHILAI C.G.	Operation & Maintenance of Electrostatic Precipitators <u>SP2</u>	M/S. SAIL BHILAI	Completed
31	BHILAI C.G.	Operation & Maintenance of Electrostatic Precipitators <u>BF7</u>	M/S. SAIL BHILAI	Completed
32	BHILAI C.G.	Operation & Maintenance of Electrostatic Precipitators <u>PBS</u>	M/S. SAIL BHILAI	Completed
33	RKM Energy	Overhauling of Coal Mill Unit #2 at 2x360MW RKM Powergen, Kharsia	M/s RKM	Completed
34	ACB Ltd	Overhauling of Turbine & Generator Unit #2 at 2x50MW ACB LTD, Chakabura Korba	M/s ACB Ltd	Completed
35	SIPL, Durg, C.G.	Erection of Eco Casing Plate Fab & amp, Boiler Piping Support Fit-up, Roof Sheeting	M/s SIPL	Completed
36	SARDA Energy & Minerals Ltd.	Overhauling of Pressure Parts (1 st Pass, 2 nd Pass, Coal burner, Cuplock & Radiography Test) Unit #2 at 2x300MW, Kharsia, Raigarh C.G.	M/s SARDA EML	Completed
37	Balco/Korba	Manpower Assistance for Maintenance & Dismantling work 540MW	M/s L&T	On going

Company



Turnover up to 10Cr



Varun Agrawal
Chartered Accountants
Plot No. 135, Transport Nagar
Korba – 495677 (C.G.)
M: +91-90981-08088
E: varunagrwal101@gmail.com

Turnover Certificate

On the basis of the information & Books of Account produced before us, this is to certify that Turnover of M/s Map Energy (PAN: AASF8911A) in the last 3 following years ended 31st March is as Under:

(Amount in Rs.)

S. No.	Financial Year	Amount
1	2022-23	4,96,53,930
2	2023-24	9,80,95,539
3	2024-25	11,50,77,103

Restriction on Use

The Certificate has been prepared exclusively for tender purpose. It should not be used, copied, otherwise reproduced or circulated for any other purpose, in whole or in part, without our prior written consent. Such consent will only be given after full consideration of the circumstances at the time.

Date: 25/11/2025

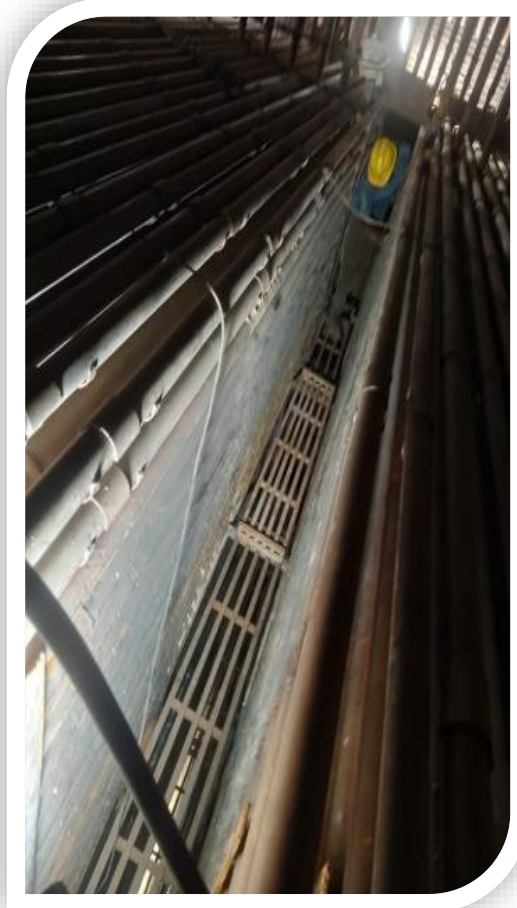
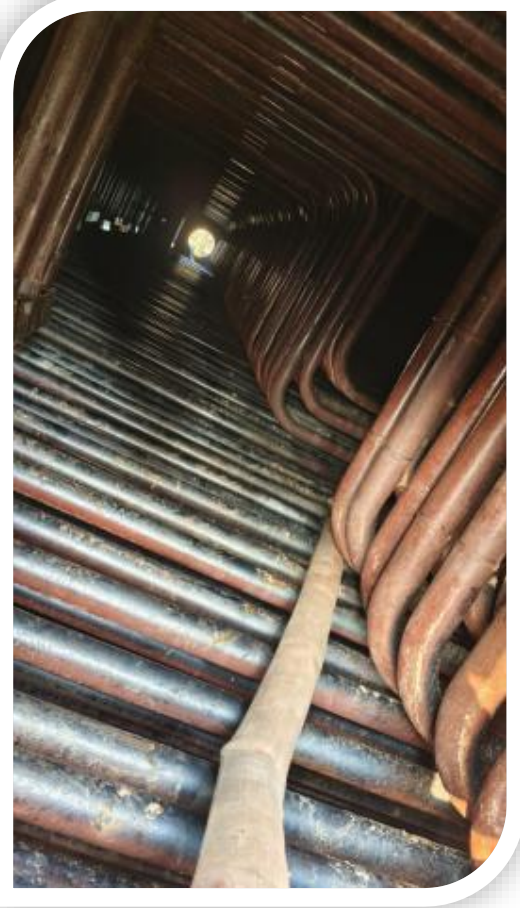
Place: Korba

For, Varun Agrawal
Chartered Accountants

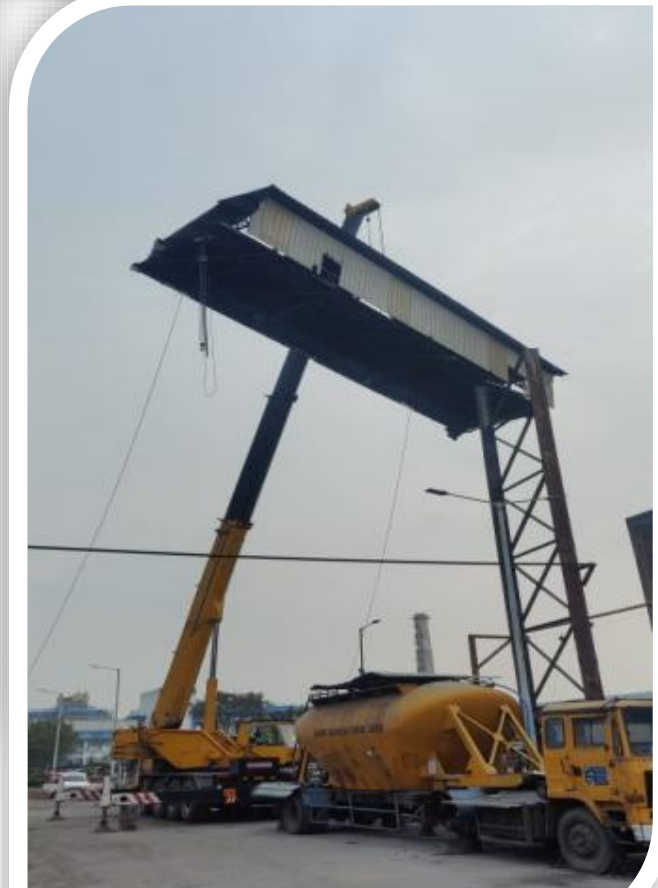
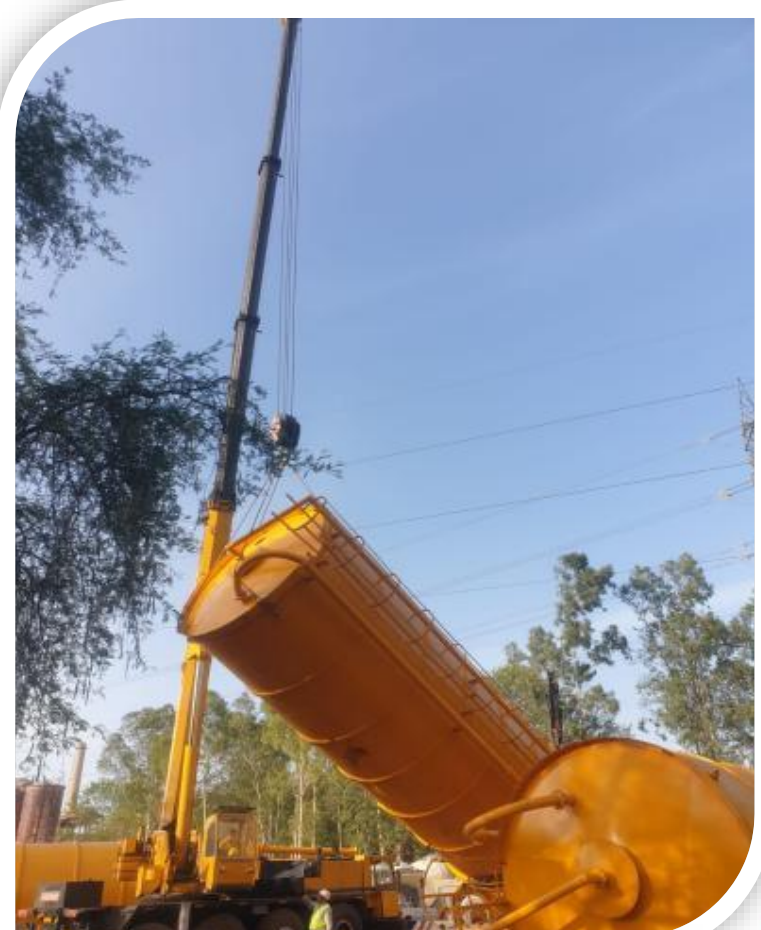
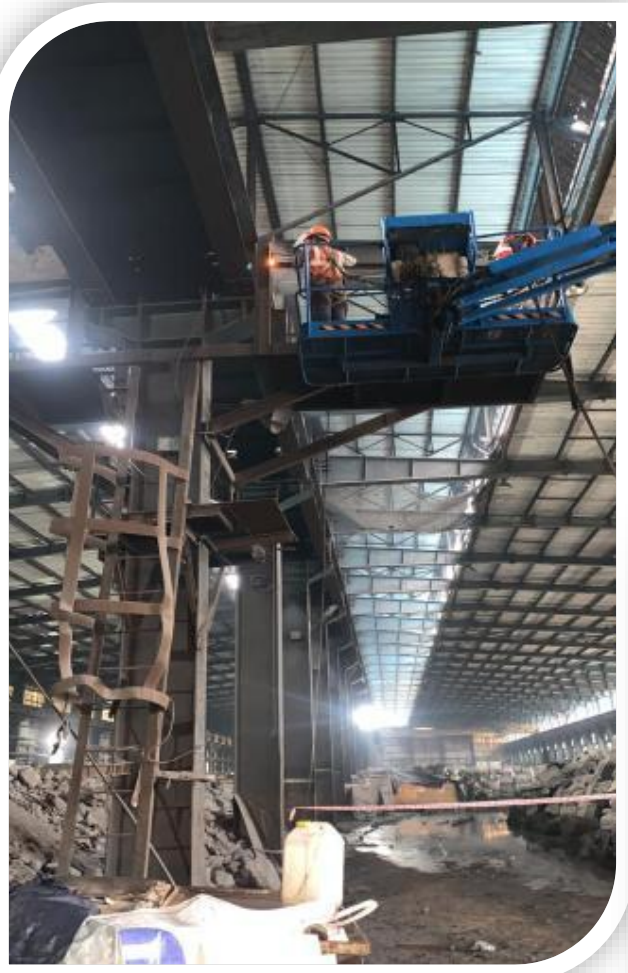
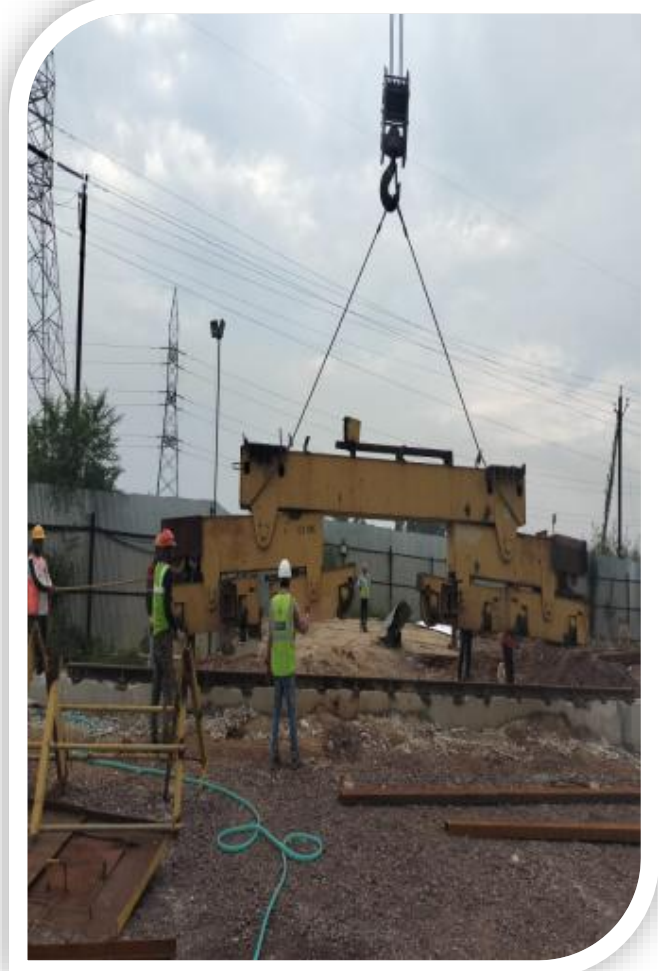
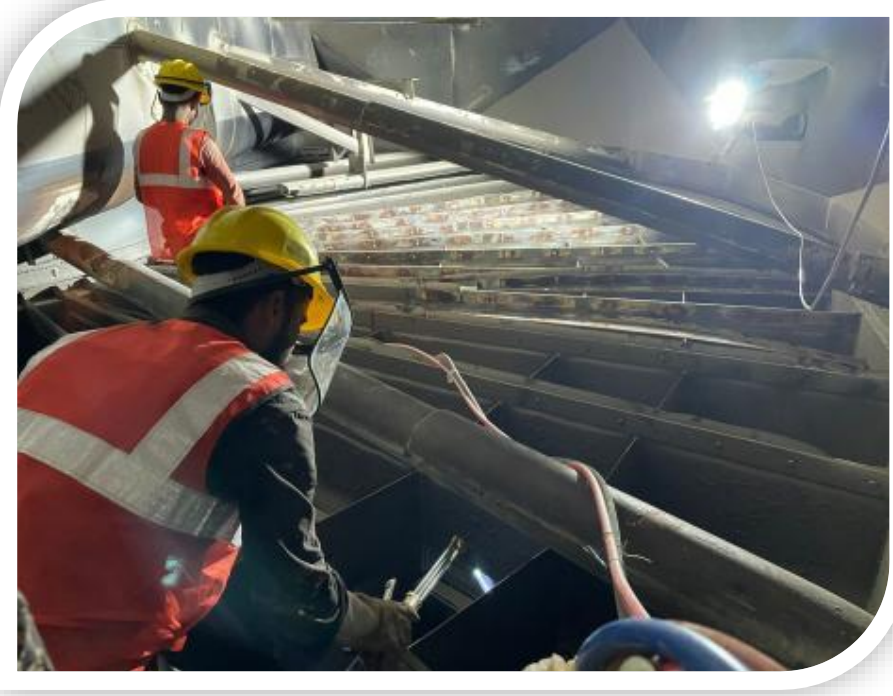
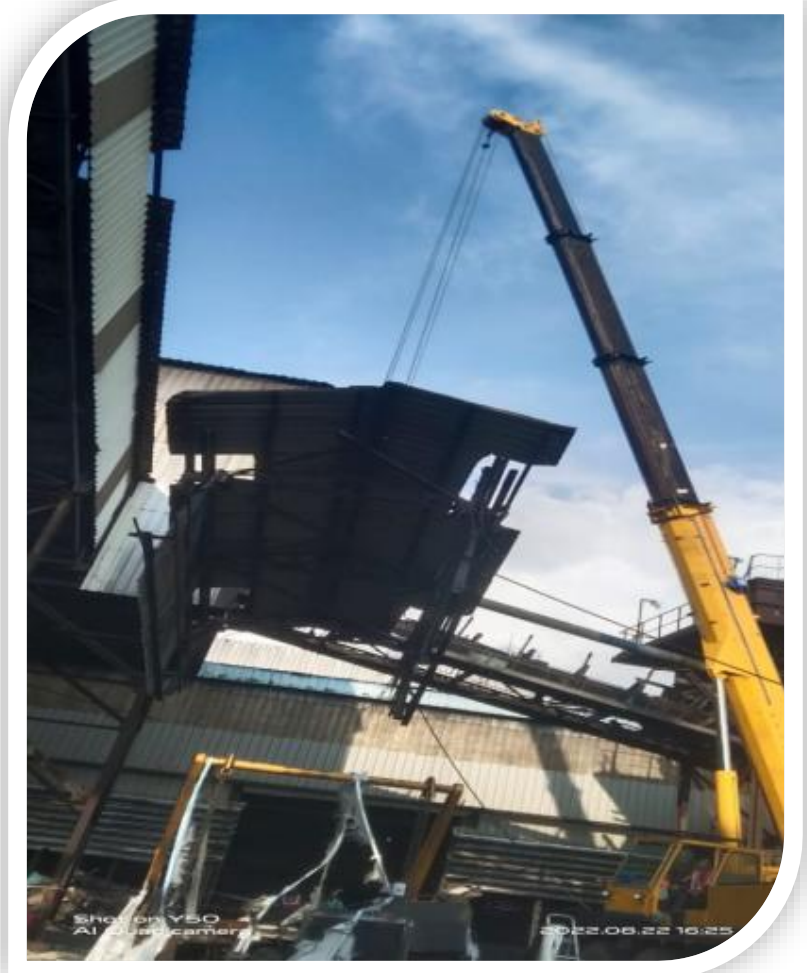
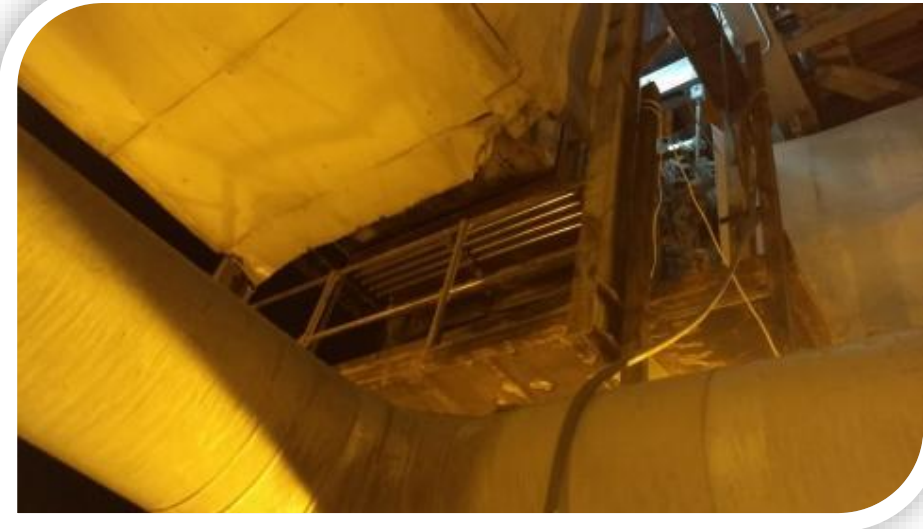


CA Varun Agrawal
Membership Number: 449498

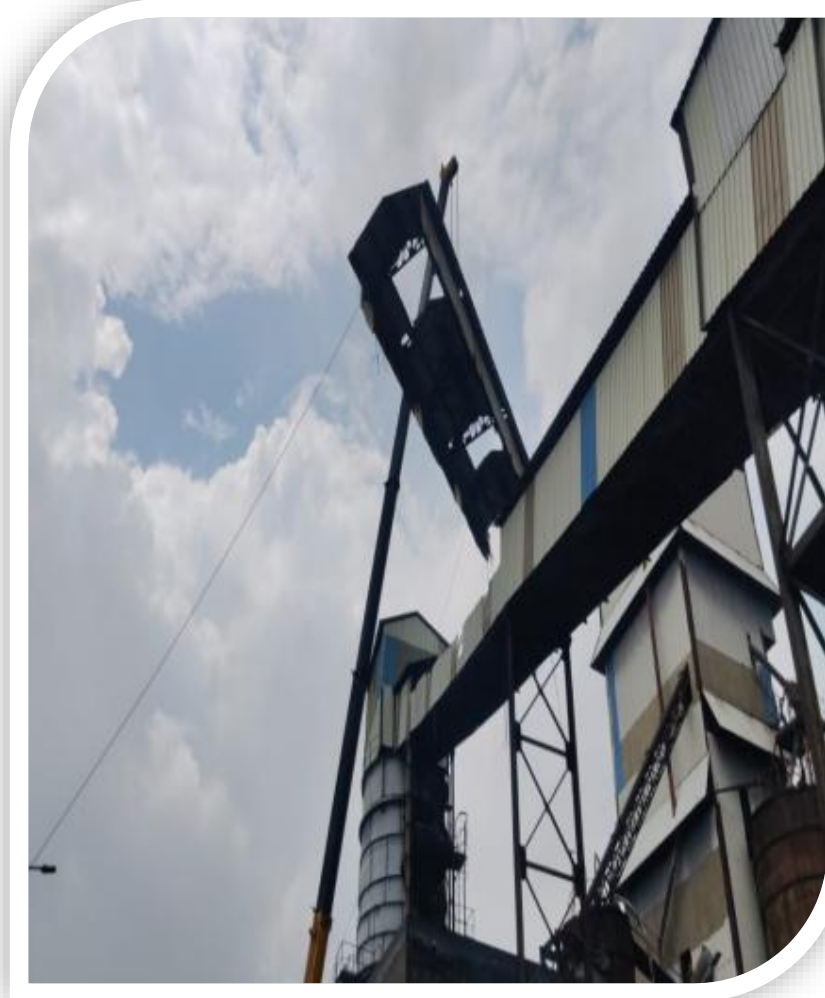
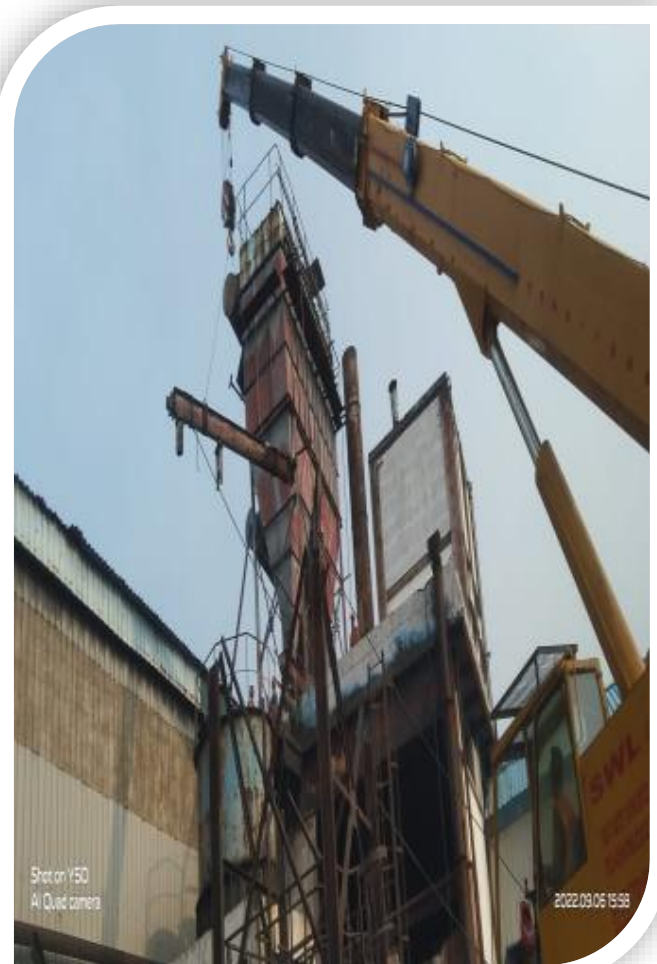
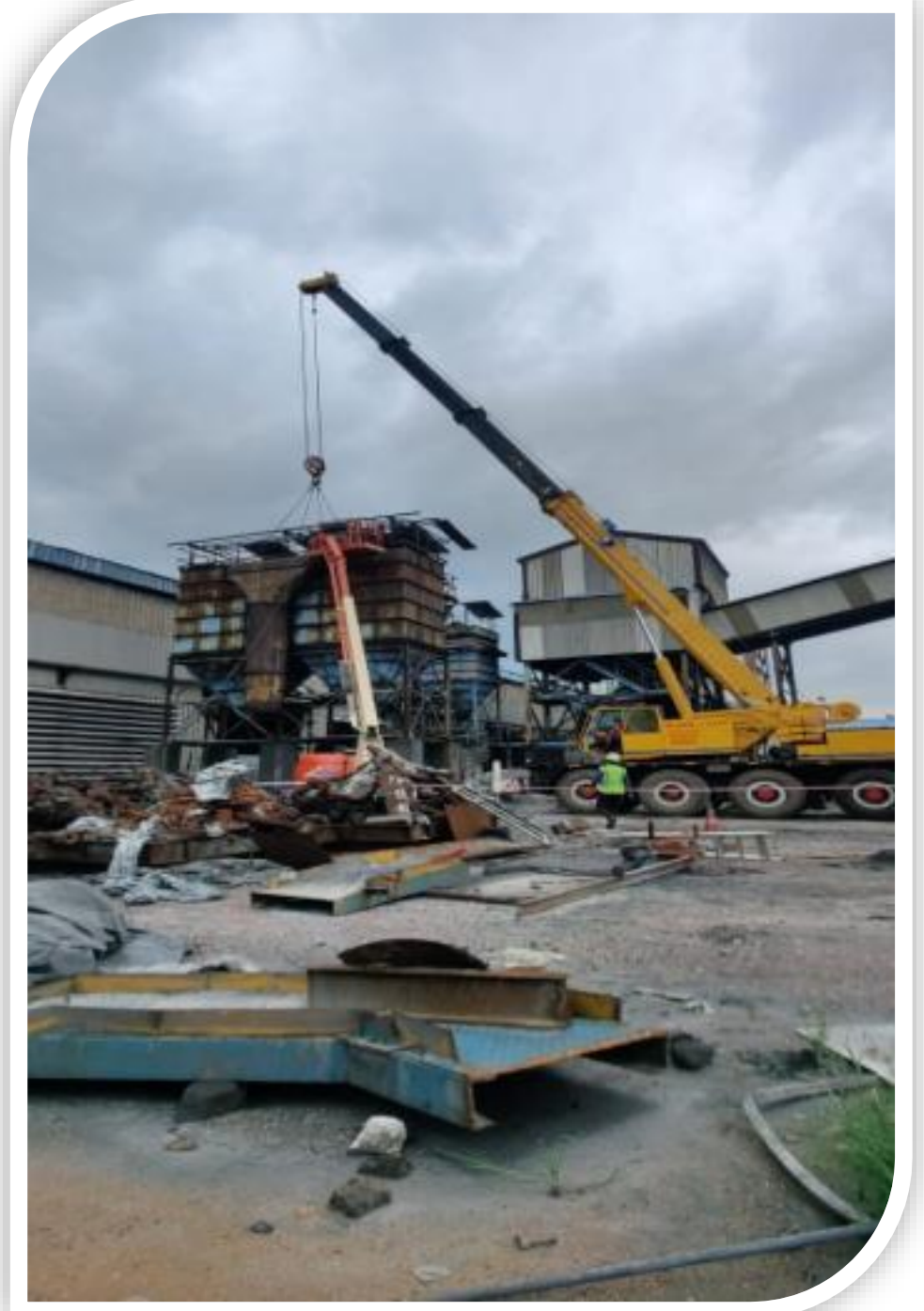
Gallery



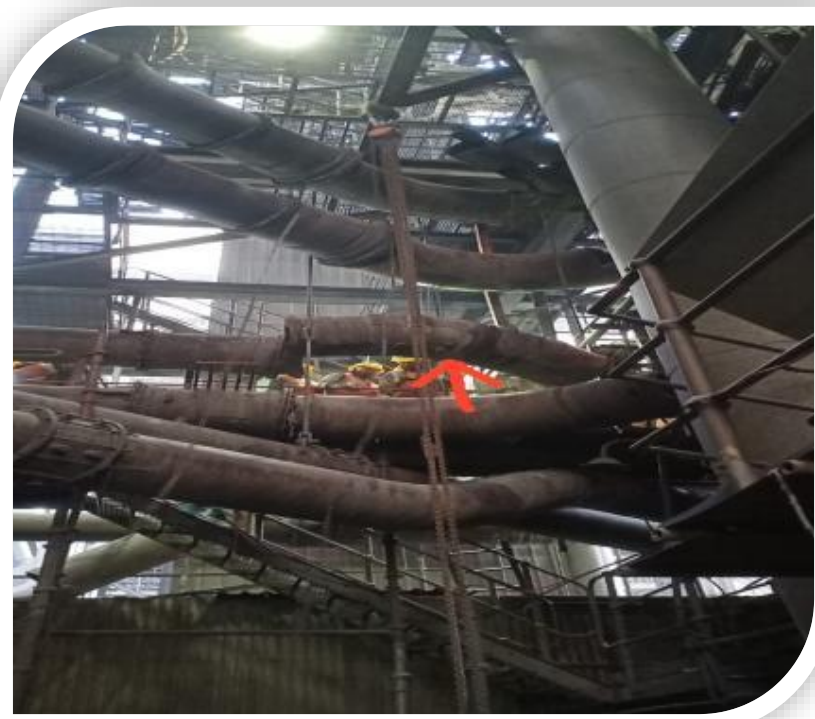
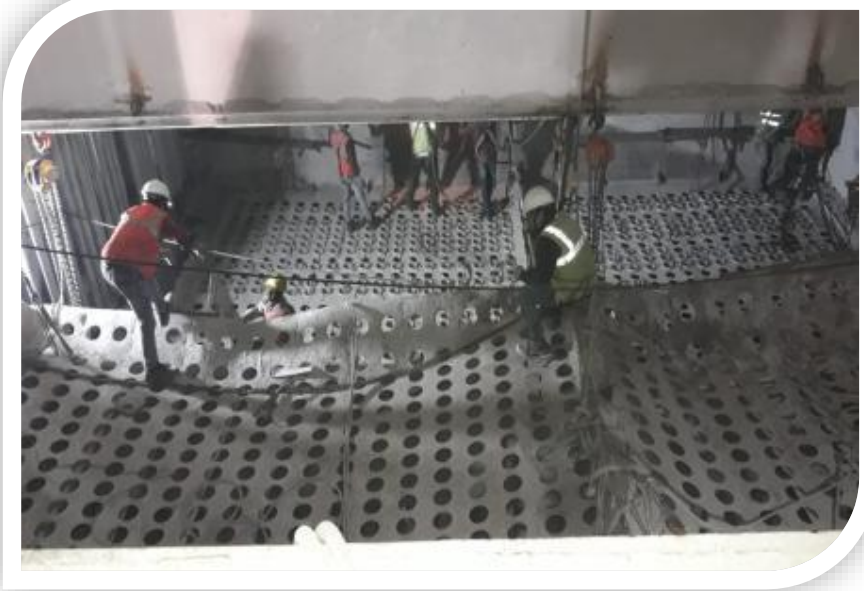
Gallery



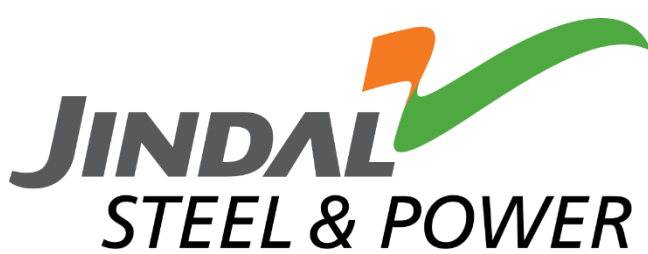
Gallery



Gallery



Our Valuable Clients



Contact Us



Shop No. 283/193
Amraiypara Mudapar, By Pass Road
Korba, Chhattisgarh - 495677



Phone & Fax NO. - +91- 9755933507
+91- 9752797810



Website - www.mapenergy.in
E-Mail ID - headoffice@mapenergy.in